

# SM500F

## Field mountable videographic recorder

Innovative, simple, reliable recording



### Unique universal mounting capability

- wall-, pipe- or panel-mount
- ultra-slim design, ≤90 mm (3.5 in.) deep

### Secure data recording

- 64 Mb internal Flash memory
- archiving to SD memory card

### 21 CFR Part 11 compliant data security

- extensive physical and electronic security features

### 12 software recording channels for recording of:

- up to 7 analog/digital inputs
- math function results
- Modbus signals

### GAMP validation package

- 21 CFR part 11 compliant

### Remote access and data retrieval

- Ethernet connectivity
- MODBUS RS485 connectivity

### Install into the harshest of process environments

- protection to NEMA4X and IP66 standards

### Choice of displays

- color TFT or monochrome options

### Quick and easy setup

- on-line help and Windows™-style menus

### Batch recording

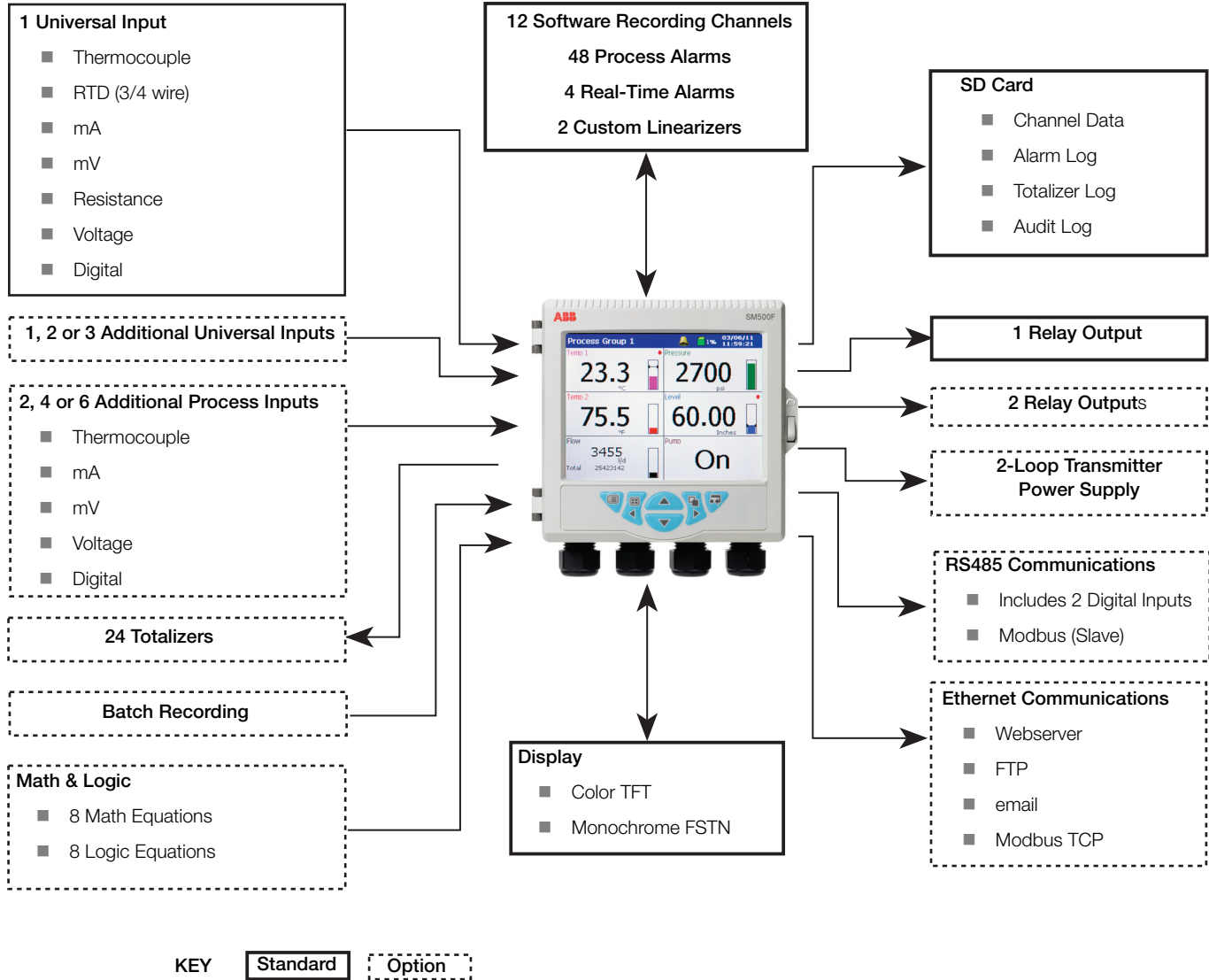
- easy tracking of batch processes

# SM500F

Field mountable videographic recorder

## SM500F

The SM500F is a field-mountable videographic recorder. Its unique enclosure design enables wall-, pipe- or panel-mounting of the unit. Process data is displayed clearly to the local operator through a variety of display formats, including chart, bargraph and digital indicator displays. Additionally, process data is logged securely to the removable memory card. Ethernet communications provide convenient remote monitoring of the process and access to logged data.



## SM500F

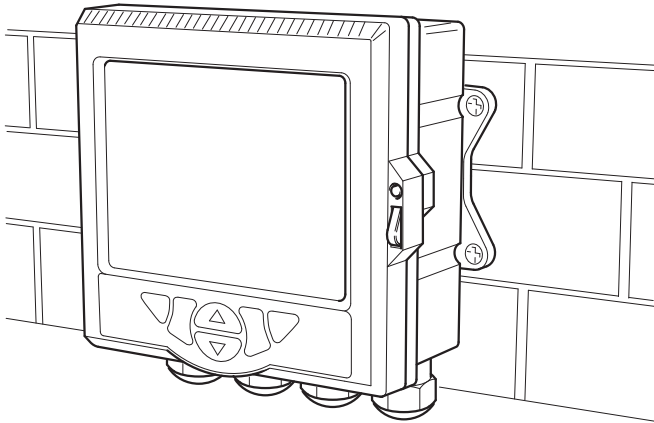
Field mountable videographic recorder

### Unique Enclosure

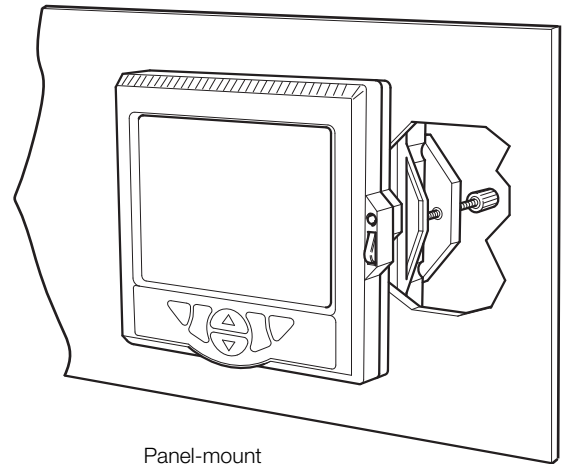
The SM500F is housed in a unique enclosure for a videographic recorder. 'Out of the box' it is possible to either wall- or panel-mount the device. The SM500F can also be pipe-mounted using the optional kit.

In any type of installation the SM500F's enclosure meets both IP66 and NEMA 4X hose-down standards. This means that the unit requires no costly additional enclosures or protection when mounted in applications that require frequent hose-down.

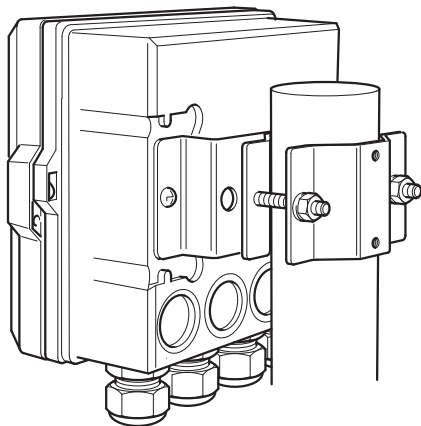
When panel-mounted the SM500F's ultra slim profile requires a panel depth of only 67 mm (2.7 in.). This ensures that there are no problems when replacing existing recording devices and enables the SM500F to be installed into existing panels where required.



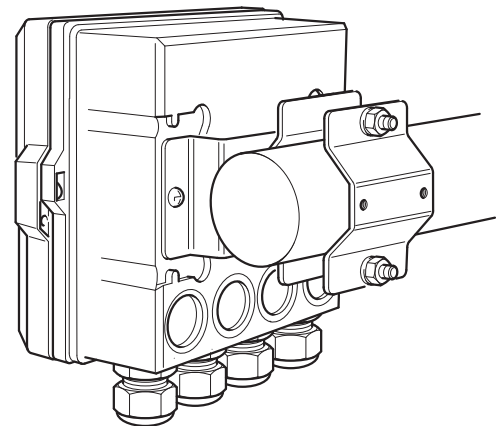
Wall-mount



Panel-mount



Vertical Pipe-mount



Horizontal Pipe-mount

*Innovative design enables multiple mounting options*

## SM500F

Field mountable videographic recorder

### Save Time and Money

The unique enclosure design of the SM500F enables it to be wall-mounted without the need for additional costly enclosures. To wall-mount a traditional videographic recorder, an additional enclosure must be sourced and a cut-out made to suit the recorder, glanded cable entries made and any internal wiring required for safety regulations installed and tested.

The work involved in producing such an enclosure increases costs and installation times significantly.

### Flexible Recording

12 software recording channels are featured in the SM500F as standard. Up to 7 physical analog/digital inputs can be fitted to the SM500F and assigned to a software recording channel. The remaining software recording channels can be used to record math block results, alarm status, signals communicated via Modbus or any other analog or digital signal available within the recorder. Each software recording channel features 4 process alarms and 2 optional totalizers.

### High Specification I/O

The SM500F features up to 4 fully universal inputs. Each input can be configured to accept a variety of process signals directly – including mA, mV, RTD (3- or 4-wire), thermocouple, voltage, resistance or digital signal. Process data can be logged at the high speed of 100 ms. All universal inputs have 500V channel-to-channel isolation.

Alternatively, the SM500F can be specified with 1 universal and 6 process inputs. Process inputs can accept mV, mA, thermocouple, voltage and digital inputs. Each process input pair is isolated by 500 V.

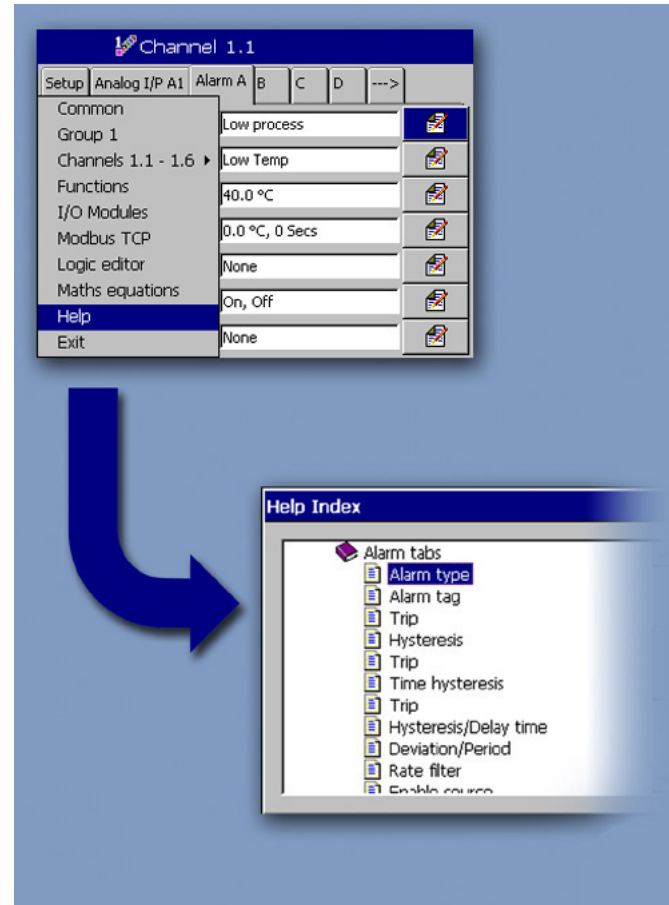
Included as standard is a relay output that can be driven from process alarms, memory card capacity warning or many other events. Two additional relays can be added if required.

The SM500F can be upgraded easily with additional I/O due to its modular design. When inserted, additional inputs or relay modules are recognized by the recorder and can then be configured ready for use.

### Ease of Use

Operation of the SM500F is performed via dedicated operator keys on the front panel. All operation and configuration is performed via intuitive Windows-style menus.

The SM500F includes context-sensitive online help that quickly assists the operator when required. This enables the SM500F to be installed quickly and configured without the use of the instruction manual.



Comprehensive and intuitive on-line help system

## SM500F

Field mountable videographic recorder

### Display Options

The SM500F is available with a choice of displays. Depending on the application requirements, either a 144 mm (5.7 in.) color TFT or 120 mm (4.7 in.) monochrome FSTN display can be specified.



*High definition color display*



*Cost-effective monochrome display option*

### 21 CFR part 11 Compliance and GAMP Validation Package

With its comprehensive audit trail, secure archiving format and extensive physical and configuration security features, the SM500F is ideally suited to applications where compliance to 21CFR part 11 (the FDA's regulations regarding electronic record keeping) is required (for further information refer to [INF06/119](#)).

In keeping with this, a template for validating the SM500F videographic recorder is available. Following GAMP 5 (a risk-based approach to compliant GxP computerized systems), the template is designed to make the validation process as simple as possible and provides an IQ and OQ that is completed at the customer site, before and after installation. Once completed, the template is then packaged together with other documentation relating to the system as a whole, ready to be presented to the governing regulatory body for inspection.

## SM500F

Field mountable videographic recorder

### Extensive Security Features

The SM500F has extensive physical and electronic security features which ensure the integrity of the recorder's configuration and archived data. These features ensure the SM500F meets the requirements of 21 CFR Part 11.

- An optional door lock can be specified. When locked the recorder's SD card is protected from unauthorized access.
- The recorder's configuration can be password protected. Up to 12 users with individual passwords and access levels can be configured.
- To meet the requirements of regulatory bodies the configuration mode of the recorder can be locked by an internal security switch. This switch can then be protected by a tamper-evident seal providing physical evidence of the integrity of the recorder's configuration.
- Security of all process data archived to the SD card is always assured. Files stored in comma-separated variable format are attributed with an Encrypted Digital Signature and files stored in binary format are encoded securely with inbuilt integrity checks. Both data storage formats are compliant with FDA standard 21 CFR Part 11.

### RS485 Communications

Optional RS485 communications enable real-time data to be transferred to and from the SM500F using Modbus protocol. Ideal for receiving instantaneous data values from a master controller, data communicated via Modbus can be trended on-screen and securely archived to the SM500F's media card. The recorder's batch recording capability can also be controlled via Modbus providing a seamless link between the SM500F and the batch/process controller.

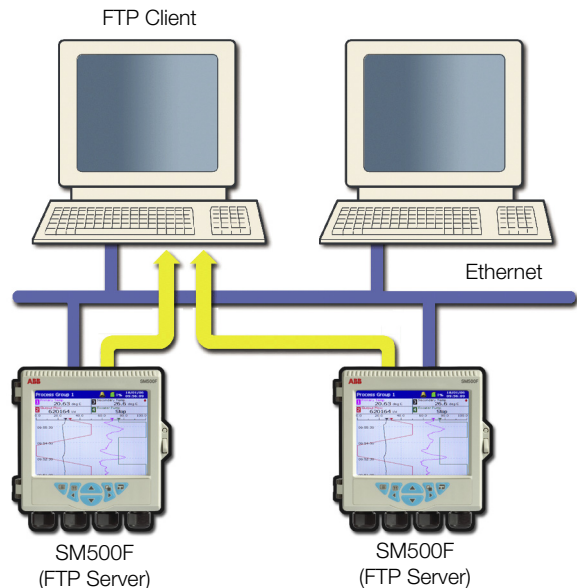
### Ethernet Communications

The SM500F can provide 10BaseT Ethernet communications via a standard RJ45 connector and uses industry-standard protocols TCP/IP, FTP and HTTP. The use of standard protocols enables easy connection into existing PC networks.

#### Data File Access via FTP (File Transfer Protocol)

The SM500F features FTP server functionality. The FTP server in the recorder is used to access its file system from a remote station on a network. This requires an FTP client on the host PC. Both MS-DOS® and Microsoft® Internet Explorer version 5.5 or later can be used as an FTP client.

- Using a standard web-browser or other FTP client, data files contained within the SM500F's memory card can be accessed remotely and transferred to a PC or network drive.
- Four individual FTP users can be programmed into the SM500F. An access level can be configured for each user.
- All FTP log-on activity is recorded in the audit log of the SM500F.
- Using ABB's DataManager Pro software, data files from multiple recorders can be backed-up automatically to a PC or network drive for long-term storage, ensuring the security of valuable process data and minimizing the operator intervention required.



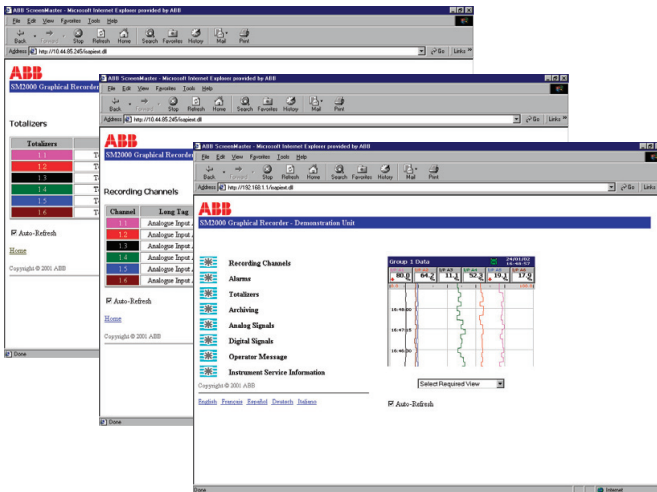
## SM500F

Field mountable videographic recorder

### Embedded Web Server

Contained within the SM500F is an embedded web-server that provides access to web pages created within the recorder. The use of HTTP (Hyper Text Transfer Protocol) enables standard web browsers to view these pages.

- Presented within the web pages is the current display of the recorder, detailed information on process signals, alarm conditions, totalizer values and other key process information.
- The historical logs stored in the SM500F's internal buffer memory can be displayed in full form within the web pages.
- Operator messages can be entered via the web server enabling comments to be logged to the recorder.
- All of the information displayed on the web pages is refreshed regularly enabling them to be used as a process supervision tool.
- The recorder's configuration can be switched to a different configuration. This can be an existing configuration in the internal memory or a new configuration file transferred to the recorder via FTP.
- The recorder's real-time clock can be set via the web server. Alternatively, the clocks of multiple recorders can be synchronized using FTS (File Transfer Scheduler).



### On-line Demonstration

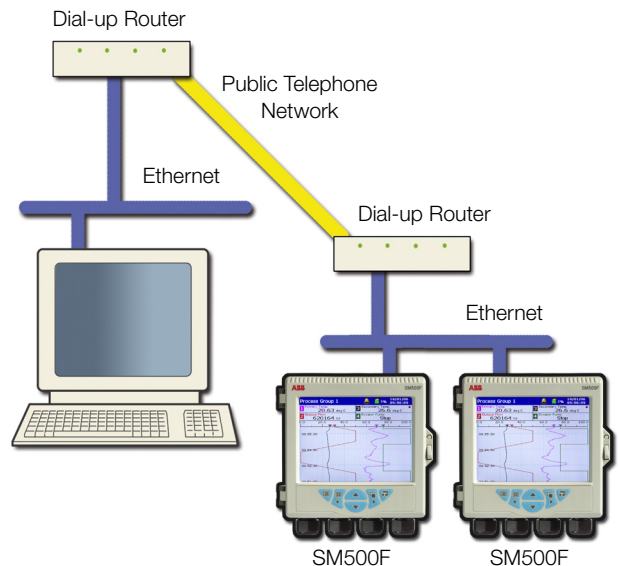
A demonstration of these features is available from an on-line recorder accessible via the internet. In the address bar of your web browser enter 'http://217.46.239.73'.

### Email Notification

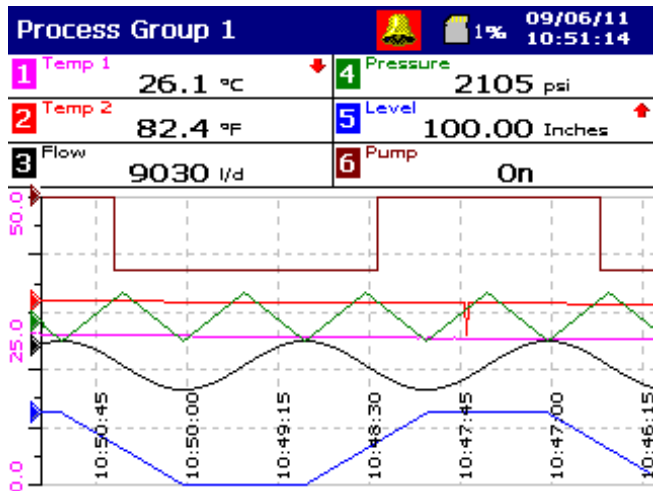
Via the SM500F's inbuilt SMTP client the recorder is able to email notification of important events. Emails triggered from process alarms or other critical process events can be sent to multiple recipients. The recorder can also be programmed to email reports of the current process status at specific times during the day, the content of which can be tailored to suit your specific process needs.

### Remote Access and Monitoring

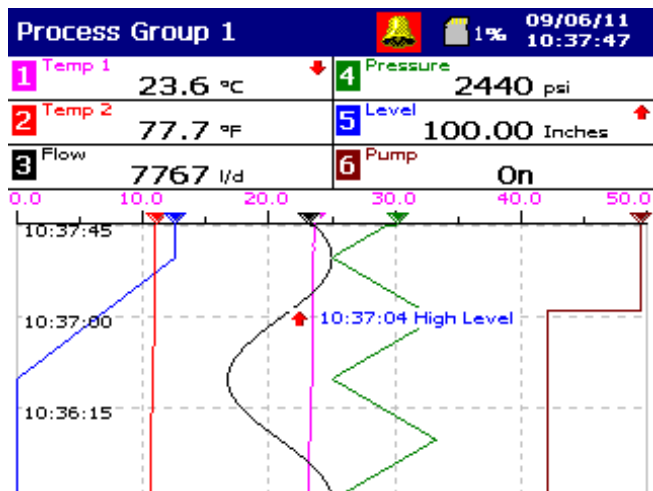
Ethernet communications can provide a link to recorders installed in remote locations. Via the use of a dial-up router an SM500F can be installed in a remote location and accessed via a public telephone network when required.



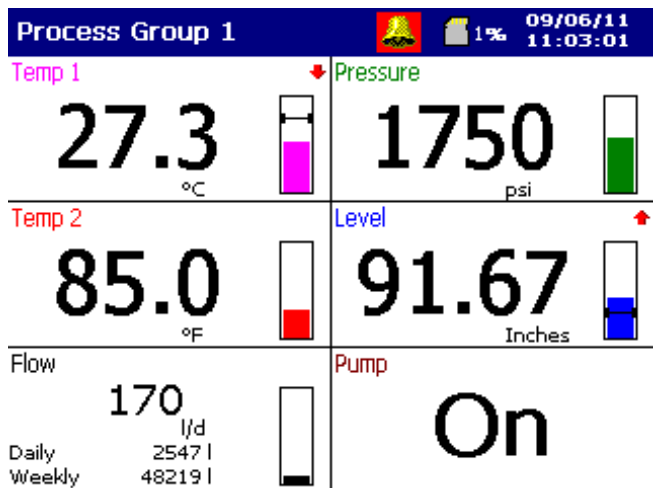
## Powerful Operator Displays



Horizontal Chart Display



Vertical Chart Display



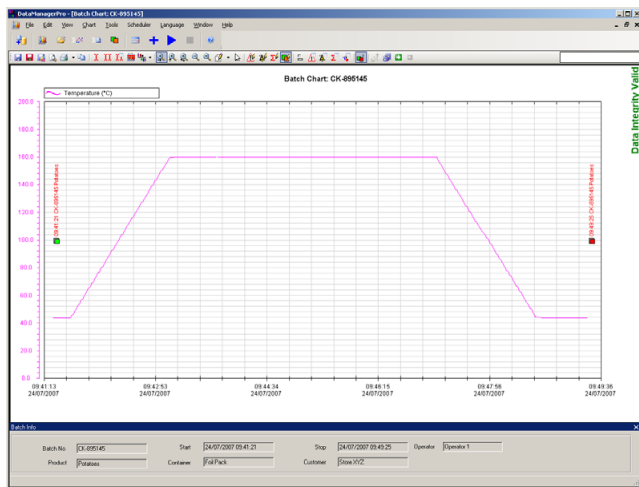
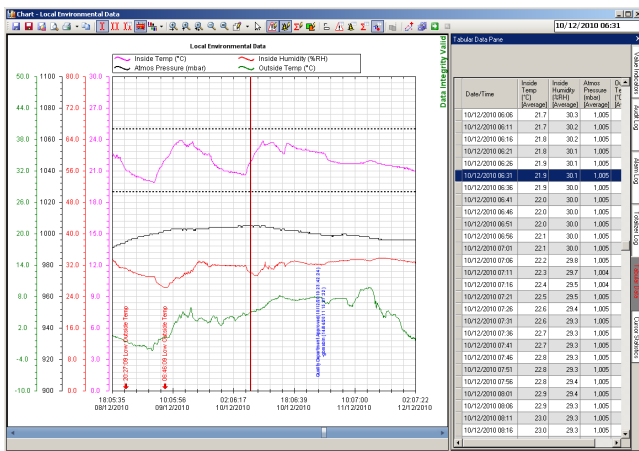
Digital Display

## DataManager Pro Off-Line Review and Analysis

Using ABB's DataManager Pro software, archived process data and historical logs recorded to a removable media card can be reviewed easily.

- Database management of data files provided by DataManager Pro ensures simple, secure, long-term storage and retrieval of historical data.
- The graphing capabilities provided by DataManager Pro ensure easy interrogation of process data.
- The validity of all data files is always checked by DataManager Pro during the storage and retrieval process, ensuring maximum data integrity.

For further information on the capabilities of DataManager Pro, refer to data sheet DS/RDM500-EN.



## Software Options

### Totalizers

Multi-function totalizers are available as an option. Each software recording channel has 2 totalizers that enable resettable and cumulative totals to be displayed simultaneously.

Totalizers can be configured to:

- calculate flow inputs from analog inputs
- count low frequency digital pulses
- calculate FO sterilization values

### Math & Logic

Advanced math and logic capabilities are available as an option. 8 multi-element math and 8 multi-element logic equations can be configured. Equations can be nested into each other to provide extensive capabilities.

- Mean, standard deviation and rolling averaging functions are provided.
- Standard addition, subtraction, multiplication and division are complemented with Log, Ln, Square root, power, Sin, Cos, Tan and absolute functions.
- Switching of process signals can be achieved via the high/low/middle signal selection and multiplexing functions.
- Predefined equations are provided for relative humidity and FO measurements.
- AND, NAND, OR, NOR, XOR and NOT operators are available within the logic equations.

All math and logic equation results can be shown on the display of the SM500F and archived to the removable media. Detailed diagnostic functions are provided for both the math and logic equations.

### Batch Recording

A batch recording option enables simple recording and reviewing of batch processes. When a batch is started it is tagged with a unique batch number, operator identification and three user-definable description fields. All information is entered on-screen with a history function allowing quick entry of commonly repeated descriptions.

Using DataManager Pro, batches can be simply and quickly traced for review using the unique batch number and description information entered at the time of recording. Additional functionality provides the ability to search and sort batch records for an entire production facility in many ways, including by product type, operator and time and date of processing.

## SM500F

Field mountable videographic recorder

## Specification

### Operation and Configuration

#### Configuration

Via tactile membrane keys on front panel or PC Configuration

Multiple configuration files can be stored in internal (up to 16 files) or external memory (with removable media option fitted)

---

### Security

#### Physical

Optional lock on door

#### Configuration security

Password protection Access to configuration is allowed only after the user has entered a password

Internal switch protection Access to configuration is allowed only after a hardware switch has been set. This switch is situated behind a tamper-evident seal

#### Logging security

Configuration Can be configured for password protection or free access to logging levels

#### Basic type security

4 individual users with unique usernames and passwords

#### Advanced type security

Number of users Up to 12

Usernames Up to 20 characters. Usernames are unique (names cannot be repeated)

Access privileges Logging access – Yes/No  
Configuration access  
None/Load file only/Limited/Full

Passwords Up to 20 characters  
A minimum required password length of 4 to 20 characters can be configured and a password expiry time can be applied to eliminate password ageing

Password failure limit Configurable for 1 to 10 consecutive occasions or 'infinite'  
A user is deactivated if a wrong password is entered repeatedly

Deactivation of inactive users Can be disabled or configured for 7, 14, 30, 60, 90, 180 or 360 days of inactivity  
Users are deactivated (by removal of access privileges) after a period of inactivity

---

### Custom Linearization

#### Number

2

#### Number of breakpoints

20 per linearizer

### Operator Messages

#### Number

24

#### Trigger

Via front panel or digital signals

#### Recording in alarm/event log

Can be enabled or disabled on configuration

---

### Display

Monochrome FSTN or Color TFT, liquid crystal display (LCD) with built-in backlight and contrast adjustment

Diagonal display area color 144 mm (5.7 in.)  
monochrome 120 mm (4.7 in.)

76800 pixel display\*

\* A small percentage of the display pixels may be either constantly active or inactive. Max. percentage of inoperative pixels <0.01%.

#### Language

English, German, French, Italian, Spanish and Chinese

#### Dedicated operator keys

- Group select/Left cursor
- View select/Right cursor
- Menu key
- Up/Increment key
- Down/Decrement key
- Enter key

#### Chart screen intervals

Selectable from 18 s to 7 days

#### Chart divisions

Programmable for up to 10 major and 10 minor divisions

#### Chart annotation

Alarm and operator messages may be annotated on the chart

Icons to identify the type of event, time of occurrence and tag are displayed

---

### Process Alarms

#### Number

48 (4 per recording channel)

#### Types

High/Low process, latch & annunciator

Rate fast/slow

#### Tag

20-character tag for each alarm

#### Hysteresis

Programmable value and time hysteresis (1 to 9999 s)

#### Alarm enable

Allows alarm to be enabled/disabled via a digital input

#### Alarm log enable

Recording of alarm state changes in the alarm/event log can be enabled/disabled for each alarm

#### Acknowledgement

Via front panel keys or digital signals

## SM500F

Field mountable videographic recorder

### Real-time Alarms

#### Number

4

#### Programmable

Day of the week, 1st of month, start and duration times

---

### Recording to Internal Memory

Data Channels

#### Internal buffer memory

64 Mb Flash memory provides storage for 16 million samples

Oldest data is overwritten automatically by new data when memory is full

#### Data integrity checks

Checksum for each block of data samples

#### Independent process groups

2

#### No. of recording channels

6 per group

#### Sources

Analog inputs, MODBUS™ inputs, any digital signal, math block

#### Filters

Programmable for each channel to allow recording of: instantaneous values, average, max., min. and max. & min. value over sample time

#### Primary/Secondary sample rates

Programmable from 0.1 s to 12 hours for each process group

#### Primary/Secondary sample rate selection

Via any digital signal or from password protected menu

#### Recording start/stop control

Via any digital signal or from password-protected menu

#### Recording Duration

Approximate duration calculated for continuous recording of 4 channels of analog data (for 8 channels divide by 2, for 2 channels multiply by 2 etc.)

Sample Rate	1 s	10 s	40 s	60 s	120 s	480 s
64 Mb Internal Flash Buffer Memory	48 days	16 months	5 years	8 years	16 years	56 years

### Archiving to Removable Media

#### Removable storage media options

- SD Card

#### Data that can be saved to removable media

- Recorded data for group 1 & 2 channels
- Alarm event log data
- Totalizer log data
- Audit log data
- Configuration
- Screen capture images

#### File structure

Configurable as either binary-encoded or comma-separated

#### Filename

20-character tag, prefixed with date/time

#### Data verification

Carried out automatically on all writes to removable-media files

#### Card Compatibility

ABB recorders comply with approved industry standards for memory cards and ABB has fully tested and recommend the use of SanDisk Standard Grade memory cards. Other brands may not be fully compatible with this device and therefore may not function correctly.

#### Card Size

Cards up to 4 Gb capacity may be used

#### Recording Duration

Approximate duration calculated for continuous recording of 4 channels of analog data

(for 8 channels divide by 2, for 2 channels multiply by 2 etc.)

#### Binary Encoded File

Sample Rate	1s	10s
128 Mb SD	3 months	2.5 years
256 Mb SD	6 months	5 years
512 Mb SD	12 months	10 years
1 Gb SD	2 years	20 years

#### Comma-separated File

Sample Rate	1s	10s
128 Mb SD	28 days	9 months
256 Mb SD	8 weeks	19 months
512 Mb SD	16 weeks	3 years
1 Gb SD	7 months	6 years

## SM500F

Field mountable videographic recorder

### Historical Logs

#### Types

Alarm/Event, Totalizer and Audit logs

#### No. of records in each historical log

Up to 200 in internal memory

Oldest data is overwritten automatically by new data when log is full

Log Type  Log Entry Events	Alarm/Event Log		Totalizer Log		Audit Log	
	Alarm state changes Operator messages		User-defined logging intervals Totalizer stop/start, reset, wrap Power up/down		Configuration/calibration changes System events Errors, operator actions	
	In Log	On Screen	In Log	On Screen	In Log	On Screen
<b>Information Recorded in Log</b>						
Date & time of event	✓	✓	✓	✓	✓	✓
Type of event	✓	✓	✓	✓	✓	✓
Tag	✓	✓	✓	✓	-	-
Source tag	✓	-	✓	-	-	-
Alarm trip value & units of measure	✓	-	-	-	-	-
Alarm state	✓	✓	-	-	-	-
Alarm acknowledgement state	✓	-	-	-	-	-
Operator ID	✓	-	-	-	✓	✓
Description	-	-	-	-	✓	✓
Batch total and units of measurement*	-	✓	✓	-	-	-
Max., min. and average values plus units*	-	✓	✓	-	-	-
Secure total	-	-	✓	-	-	-

\* If Totalizer option is enabled and selected

## SM500F

Field mountable videographic recorder

### Analog/Digital Inputs

#### General

##### Number of inputs

7 (1 as standard, up to 6 optional)

##### Input types

mA, mV, voltage, resistance, THC, 3-wire RTD, 4-wire RTD, volt-free digital, 24 V DC digital\*

##### Thermocouple types

B, E, J, K, L, N, R, S, T

##### Resistance thermometer

PT100

##### Other linearizations

$\sqrt{x}$ ,  $x^{3/2}$ ,  $x^{5/2}$ , custom linearization

##### Digital filter

Programmable 0 to 60s

##### Display range

-99999 to +999999

##### Common mode noise rejection

>120 dB at 50/60 Hz with 300  $\Omega$  imbalance resistance

##### Normal (series) mode noise rejection

>60 dB at 50/60 Hz

##### CJC rejection ratio

0.05  $^{\circ}\text{C}/^{\circ}\text{C}$

##### Sensor break protection

Programmable as upscale or downscale

##### Temperature stability

0.02  $\%/^{\circ}\text{C}$  or 2  $\mu\text{V}/^{\circ}\text{C}$

##### Long term drift

<0.2 % of reading or 20  $\mu\text{V}$  annually

##### Input impedance

>10 M $\Omega$  (millivolts inputs)

>10 M $\Omega$  (voltage inputs)

44  $\Omega$  (mA inputs)

### Standard Analog Input Modules

Linear Inputs	Standard Analog Input	Accuracy (% of reading)
Millivolts	0 to 150 mV	0.1 % or $\pm 20 \mu\text{V}$
Milliamps	0 to 50 mA	0.2 % or $\pm 4 \mu\text{A}$
Volts	0 to 25 V	0.2 % or $\pm 1 \text{ mV}$
Resistance $\Omega$ (low)*	0 to 550 $\Omega$	0.1 % or $\pm 0.1 \Omega$
Resistance $\Omega$ (high)*	0 to 10 k $\Omega$	0.1 % or $\pm 0.5 \Omega$
Digital Input Specification	Switching threshold 4 V — Min. pulse width of On or Off state 200 ms	
Sample Interval	Universal Input Module – 100 ms per sample Dual (Process Input) Module – 200 ms per sample	
Input Isolation	Universal Input Module – 500 V DC channel-to-channel Dual (Process Input) Module – None	
Isolation from Rest of Instrument	Galvanically isolated to 500 V DC	

\* Resistance/RTD not available on Dual (Process Input) module.

### Analog Input Types

Thermocouple	Maximum Range $^{\circ}\text{C}$	Maximum Range $^{\circ}\text{F}$	Accuracy (% of reading)
B	-18 to 1800	0 to 3270	0.1 % or $\pm 2 \text{ }^{\circ}\text{C}$ (3.6 $^{\circ}\text{F}$ ) (above 200 $^{\circ}\text{C}$ [392 $^{\circ}\text{F}$ ]) *
E	-100 to 900	-140 to 1650	0.1 % or $\pm 0.5 \text{ }^{\circ}\text{C}$ (0.9 $^{\circ}\text{F}$ )
J	-100 to 900	-140 to 1650	0.1 % or $\pm 0.5 \text{ }^{\circ}\text{C}$ (0.9 $^{\circ}\text{F}$ )
K	-100 to 1300	-140 to 2350	0.1 % or $\pm 0.5 \text{ }^{\circ}\text{C}$ (0.9 $^{\circ}\text{F}$ )
L	-100 to 900	-140 to 1650	0.1 % or $\pm 1.5 \text{ }^{\circ}\text{C}$ (2.7 $^{\circ}\text{F}$ )
N	-200 to 1300	-325 to 2350	0.1 % or $\pm 0.5 \text{ }^{\circ}\text{C}$ (0.9 $^{\circ}\text{F}$ )
R	-18 to 1700	0 to 3000	0.1 % or $\pm 1 \text{ }^{\circ}\text{C}$ (1.8 $^{\circ}\text{F}$ ) (above 300 $^{\circ}\text{C}$ [540 $^{\circ}\text{F}$ ]) *
S	-18 to 1700	0 to 3000	0.1 % or $\pm 1 \text{ }^{\circ}\text{C}$ (1.8 $^{\circ}\text{F}$ ) (above 200 $^{\circ}\text{C}$ [392 $^{\circ}\text{F}$ ]) *
T	-250 to 300	-400 to 550	0.1 % or $\pm 0.5 \text{ }^{\circ}\text{C}$ (0.9 $^{\circ}\text{F}$ ) (above -150 $^{\circ}\text{C}$ [-238 $^{\circ}\text{F}$ ]) *

\* For B, R, S and T thermocouples, accuracy is not guaranteed below the value stated.

RTD	Maximum Range $^{\circ}\text{C}$	Maximum Range $^{\circ}\text{F}$	Accuracy (% of reading)
PT100	-200 to 600	-325 to 1100	0.1 % or $\pm 0.5 \text{ }^{\circ}\text{C}$ (0.9 $^{\circ}\text{F}$ )

## SM500F

Field mountable videographic recorder

### Relays

#### Number of relays

1 as standard, 2 optional, (1 Module)\*

\* When using dual relay option boards, high voltages above 120 V AC must not be connected alongside low voltage DC supplies.

#### Type and rating

Relay type	Selectable NO/NC	
Voltage	250 V AC	30 V DC
Current	5 A AC	5 A DC
Loading (non-inductive)	1250 VA	150 W

For dual relay boards, only the following permutations are permitted.

30 V DC / 30 V DC  
120 V AC / 30 V DC  
120 V AC / 120 V AC  
240 V AC / 240 V AC  
240 V AC / 120 V AC

AC supplies must be on the same phase.

---

### 2-Wire Transmitter Power Supply (optional)

#### Number

2 isolated supplies

#### Voltage

24 V DC nominal

#### Drive

22 mA (each supply)

---

### Ethernet Module (optional)

#### Physical medium

10BaseT

#### Protocols

TCP/IP, FTP (server), HTTP, SMTP, Modbus TCP (Client + Server)

#### FTP server functions

Directory selection & listing  
File upload/download  
4 independently configurable users with full or read-only access

#### Web server functions

Operator screen monitoring/selection. Remote monitoring of recording channels, analog/digital signals, alarms, totalizers and archiving.

### Modbus/Digital Input Module (optional)

#### Modbus

##### Physical medium

2-wire RS485

##### Protocol

RTU

##### Baud rates

1200, 2400, 4800, 9600, 88400, 115200

##### Parity

None, odd, even

#### Digital input

##### Number

2

##### Digital input types

Volt-free/24 V (automatic)

##### Polarity

User-configurable

---

### Totalizer (optional)

#### Number

2 per recording channel, 10-digit totals

#### Type

Analog, digital, F0

#### Statistical calculations

Average, maximum, minimum (for analog signals)

---

### Advanced Math (optional)

#### Type

8 equations provide ability to perform general arithmetic calculations including F0, mass flow (of ideal gases), relative humidity and emissions calculations

#### Size

40-character equation

#### Functions

+, -, /, log, Ln., Exp,  $X^n$ ,  $\sqrt{\quad}$ , Sin, Cos, Tan, mean, rolling average, standard deviation, high/median/low select, multiplexer, absolute, relative humidity

#### Tags

8- and 20-character tags for each block

#### Update rate

1 enabled Math block is updated every 100 ms

## SM500F

Field mountable videographic recorder

### Logic Equations (optional)

#### Number

8

#### Size

11 elements each

#### Functions

AND, OR, NAND, NOR, XOR, NOT

#### Tags

20-character tag for each equation

#### Update rate

300 ms

---

## EMC

### Emissions & immunity

Meets requirements of IEC61326 for an Industrial Environment

---

## Electrical

### Supply ranges

100 V to 240 V AC  $\pm$  10% (90 V min to 264 V max) or

105 V DC min. to 115 V DC max.

10 V to 36 V DC (optional)

### Power consumption

10 W max. 15 VA max.

### Power interruption protection

No effect for interrupts of up to 20 ms

---

## Safety

### General safety

EN61010-1

Overvoltage Class III on mains, Class II on inputs and outputs

Pollution category 2

CSA 61010-1

UL 61010-1

### Isolation

500 V DC to earth (ground)

## Environmental

### Operating temperature range

-10 to 50 °C (14 to 122 °F)

### Operating humidity range

5 to 95 %RH (non-condensing)

### Storage temperature range

-20 to 70 °C (-4 to 174 °F)

### Enclosure sealing

IP66 and NEMA4X (the enclosure meets the requirements of the NEMA 4X hosedown test)

### Vibration

Conforms to EN60068-2-6

---

## Physical

### Size

144 mm (5.7 in.) x 144 mm (5.7 in.) x 84 mm (3.3 in.)

### Weight

1.0 kg (2.2 lb) approx. (unpacked)

### Panel cutout

138 mm (5.43 in.) x 138 mm (5.43 in.) x 67 mm (2.7 in.) behind panel

### Case material

Glass-filled polycarbonate

### Operator keypad

Tactile membrane keys

### No. of keys

6

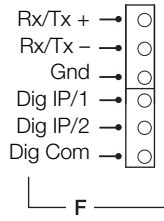
### Cable gland entries

4 x 22.2 mm (0.87 in.) o.d. entries for 1/2 in. NPT glands

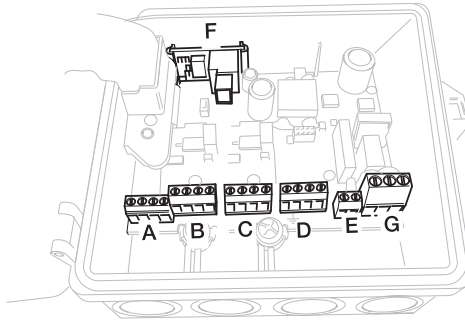
# SM500F

Field mountable videographic recorder

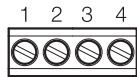
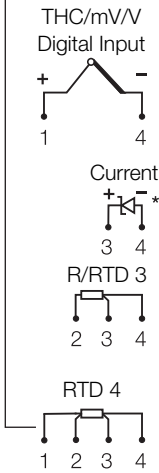
## Electrical Connections



**Ethernet/Modbus and Digital Input**

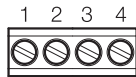
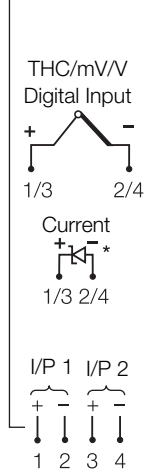


**ABCD Single Input**

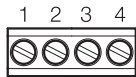


**A**

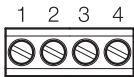
**BCD Dual Input**



**B**

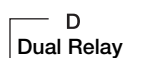


**C**

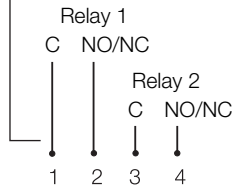
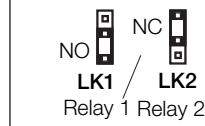


**D**

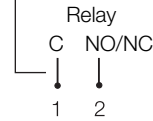
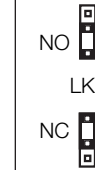
**D 24 V Tx PSU**



**D Dual Relay**

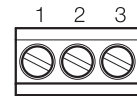
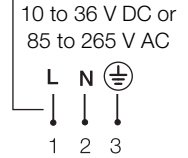


**E Relay**



**E**

**G Power Supply**

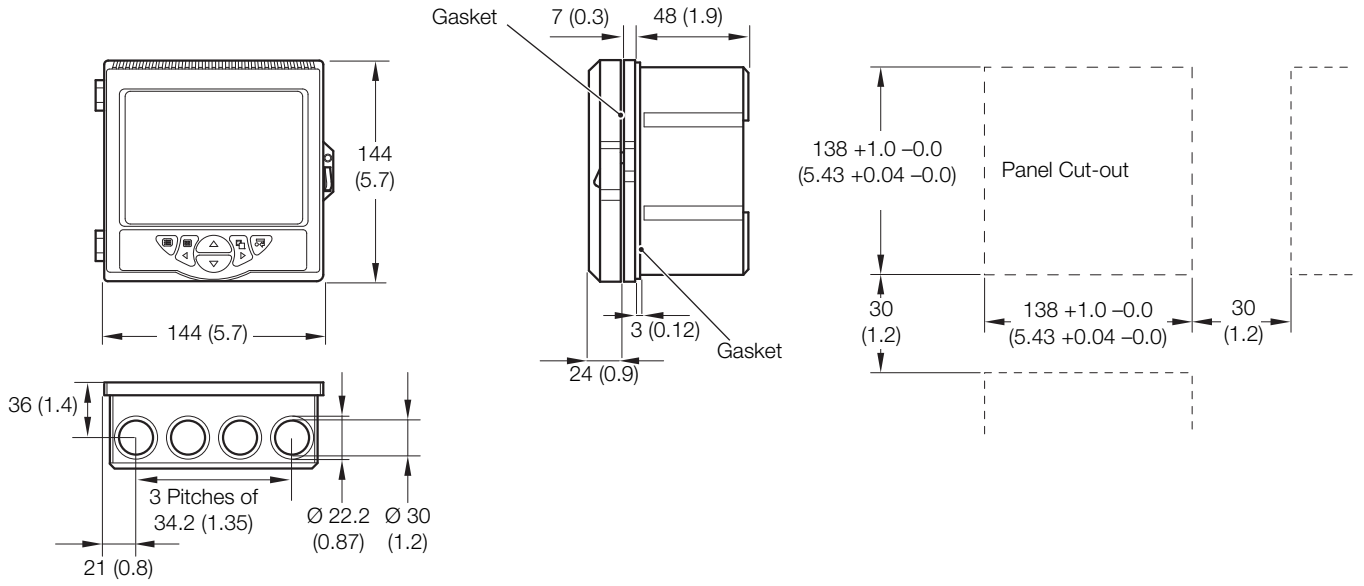


**G**

\* In the powered-down condition the current input is open circuit. In order to maintain a current loop when the recorder is powered down, fit a zener diode (BZX79 – B/C2V4) to the input as shown.

## Overall Dimensions

Dimensions in mm (in.)



**SM500F**

Field mountable videographic recorder

**Ordering Information**

Field mountable videographic recorder	SM50	X	X	X/	X	X	X	X	X	X	X	X/	XXX
<b>Channels</b>													
One analog/digital input (1 x universal)		1											
Two analog/digital inputs (2 x universal)		2											
Three analog/digital inputs (3 x universal)		3											
Four analog/digital inputs (4 x universal)		4											
Four analog/digital inputs (2 x universal, 1 x dual)		A											
Five analog/digital inputs (1 x universal, 2 x dual)		B											
Five analog/digital inputs (3 x universal, 1 x dual)		C											
Six analog/digital inputs (2 x universal, 2 x dual)		D											
Seven analog/digital inputs (1 x universal, 3 x dual)		E											
<b>Mounting</b>													
Field/Panel			F										
<b>Display Type</b>													
Monochrome				B									
Color				C									
<b>Electrical Code</b>													
Standard					B								
UL					U								
CSA					C								
<b>Software Option</b>													
None						0							
Math & Logic						1							
Totalizers						2							
Math, Logic & Totalizers						3							
Batch						4							
Batch & Totalizers						5							
Batch & Math & Logic						6							
Batch & Math & Logic & Totalizers						7							
<b>Communications</b>													
None							0						
Ethernet 10BaseT							E						
RS485 Modbus & 2 x Digital I/P							S						
<b>Optional Output Module</b>													
None								0					
2 Relays <sup>(1)</sup>								R					
Transmitter power supply <sup>(1)</sup>								T					

Continued...

## SM500F

Field mountable videographic recorder

Field mountable videographic recorder	SM50	X	X	X/	X	X	X	X	X	X	X	X/	XXX
<b>Power Supply</b>													
85 to 265 V AC										0			
10 to 36 V DC										1			
<b>Gland Entry Type</b>													
None – 4 x blanking plug supplied										0			
4 x standard (1/2 in. NPT) supplied <sup>(2)</sup>										1			
3 x standard (1/2 in. NPT) and 1 x Ethernet supplied <sup>(3)</sup>										2			
<b>Door Lock</b>													
None											0		
Fitted											1		
<b>Language</b>													
English													E
German													G
French													F
Italian													I
Spanish													S
Portuguese													P
Chinese													C
<b>Special Features</b>													
Standard													STD
Custom programming													CUS
Special													SPXX
GAMP validation compatible recorder <sup>(4)</sup>													VAL

(1) Not available with channel options 4, C, D and E

(2) Available only if Ethernet communication is not specified

(3) Available only if Ethernet is specified

(4) Recorder supplied preconfigured to customer's requirements, together with calibration and conformity certificates. Configuration must be supplied using custom configuration sheet – INF08/033.

### Standard Accessories

Included with each recorder:

Wall/Panel Mounting Clamps

SD Memory Card

### Optional Accessories

2 Gb SD Card	B12469
USB SD Memory Card Reader	B12028
DataManager Pro software	RDM500-CD
DataManager Pro single user license	RDM500L
DataManager Pro multi-user license	RDM500ML
Pipe-mounting Kit	SM500/0703
Validation package template	CD/VALDSM500F

# Contact us

## **ABB Limited**

### **Process Automation**

Howard Road

St. Neots

Cambridgeshire PE19 8EU

UK

Tel: +44 (0)1480 475321

Fax: +44 (0)1480 217948

## **ABB Inc.**

### **Process Automation**

125 E. County Line Road

Warminster

PA 18974

USA

Tel: +1 215 674 6000

Fax: +1 215 674 7183

**[www.abb.com](http://www.abb.com)**

## Note

We reserve the right to make technical changes or modify the contents of this document without prior notice. With regard to purchase orders, the agreed particulars shall prevail. ABB does not accept any responsibility whatsoever for potential errors or possible lack of information in this document.

We reserve all rights in this document and in the subject matter and illustrations contained therein. Any reproduction, disclosure to third parties or utilization of its contents in whole or in parts – is forbidden without prior written consent of ABB.

Copyright© 2012 ABB

All rights reserved

3KXR100501R1007

Modbus is a registered trademark of the Modbus-IDA organization

Microsoft is a registered trademark of Microsoft Corporation in the United States and/or other countries